



## 38 Smallburn Avenue Newborough VIC

3 1 3

Located in a quiet street in popular Old Newborough, 38 Smallburn Avenue is an attractive three-bedroom brick veneer home with fantastic kerb appeal. Offering great value this quality built home includes stunning polished timber floors and views towards the Haunted Hills. This home is just perfect for anyone seeking to purchase their first home but would also suit a wide range of buyers.

**Price** : \$ 385,000  
**Land Size** : 703 sqm  
**View** : <http://www.oneagencylv.com.au/sale/vic/gippsland/newborough/residential/house/6772340>

The property features include:

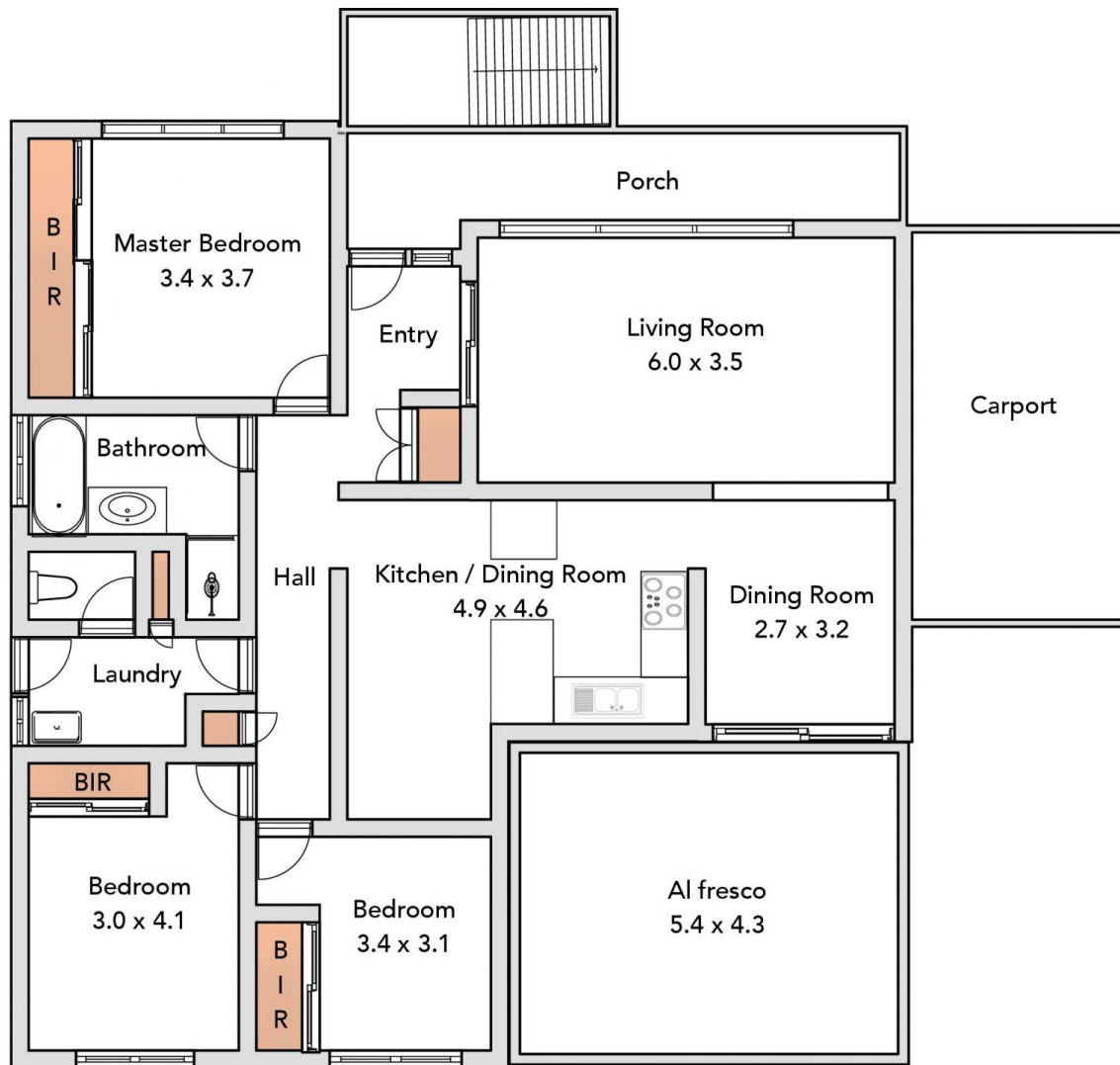
- Three good sized bedrooms all complete with built in robes.
- Lovely light and bright living area with a bay window and polished floorboards.
- Well maintained kitchen complete with breakfast bar, a dishwasher and adjoins the dining space.
- Excellent bathroom with separate shower and bath



**Anthony Bloomfield**  
03 5174 2740



**Siobhan McNulty**  
0474 476 355



**ONE AGENCY**  
LATROBE VALLEY

