



4/15 Roseneath Street Traralgon VIC

2 1 1

One Agency Latrobe Valley is proud to present 4/15 Roseneath Street, Traralgon. Within walking distance to the CBD, this affordable updated unit is the perfect start for an investor or for a first home buyer looking to get into the market.

Price : \$ 285,000
Land Size : 130 sqm
View : <http://www.oneagencylv.com.au/sale/vic/gippsland/traralgon/residential/unit/7175235>

Features include:

- 2 Bedrooms with BIR
- Good size lounge room with gas heating and split system air conditioning for your year round comfort
- Kitchen meals area with gas appliances and plenty of storage space
- Bathroom with bath, shower and a toilet upstairs
- Laundry with second toilet downstairs
- Neutral decor throughout
- Single car carport
- Fully enclosed courtyard and low maintenance surrounds



Anthony Bloomfield
03 5174 2740

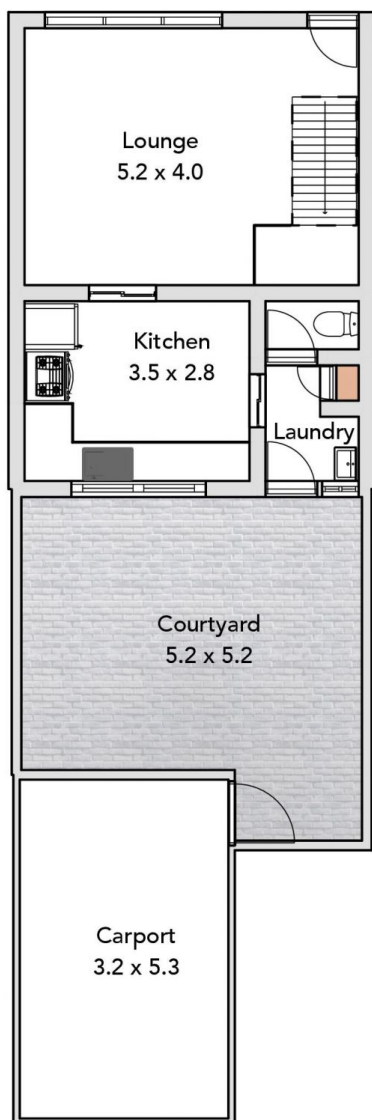


Siobhan McNulty
0474 476 355

ONE AGENCY

LATROBE VALLEY

Ground Floor



First Floor

