



11 Tintern Place Traralgon VIC

3 2 2

One Agency Latrobe Valley is proud to present 11 Tintern Place, Traralgon. Located in one of Traralgon's most sought after locations. Perfectly situated near, schools, sporting facilities, walking tracks and the Traralgon CBD, this contemporary home is perfect for families, couples and investors alike.

Features Include:

- Stone bench tops, 900mm cooking, dishwasher, breakfast bar and large walk in pantry round out a fantastic kitchen which adjoins a separate dining area
- ? An oversized master bedroom includes large walk through robe and ensuite with double basins to make getting ready in the mornings a breeze.
- The 2 remaining bedrooms both include built in robes and are serviced by a modern family bathroom that includes

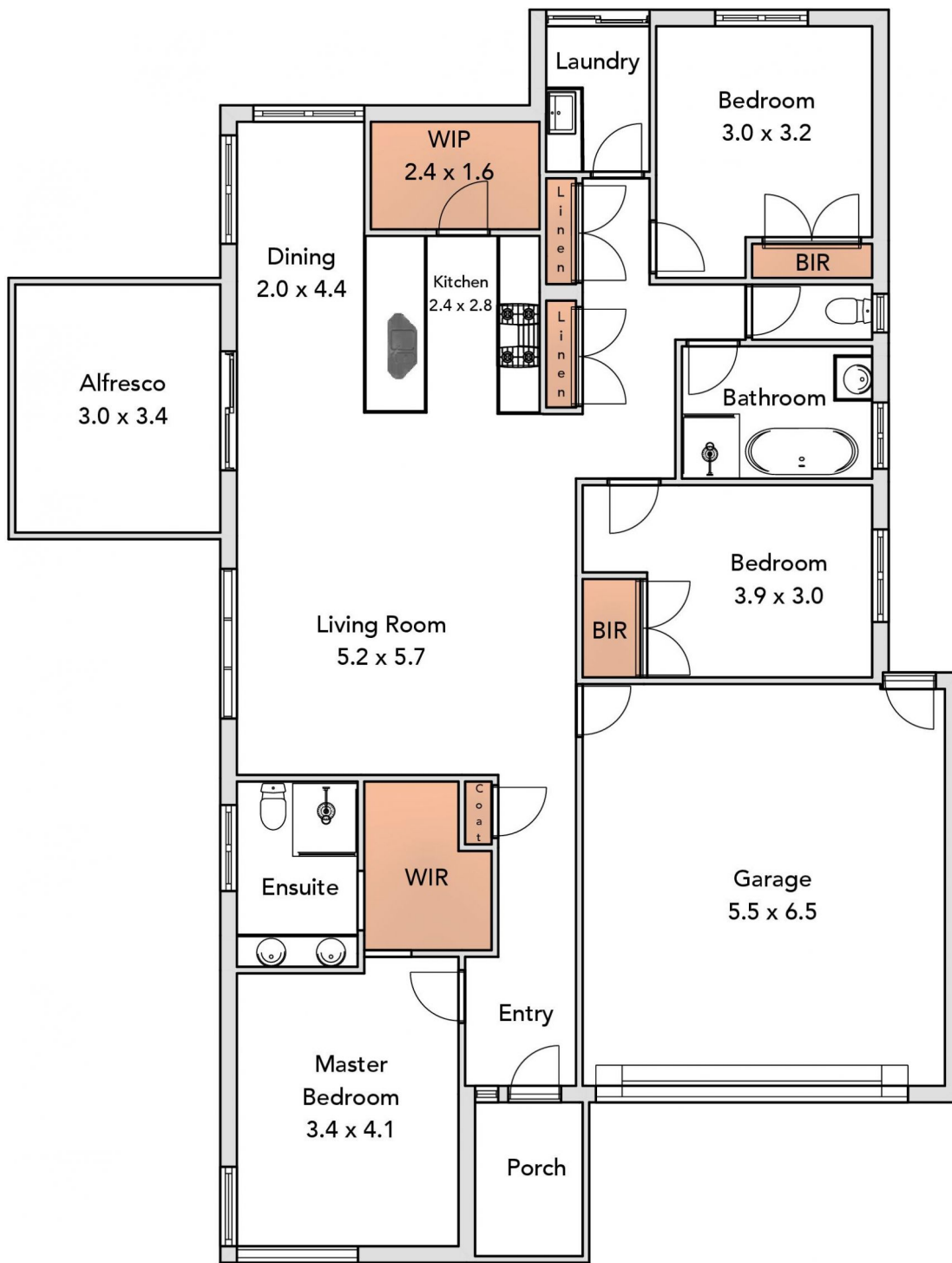
Price : \$ 530,000
Land Size : 575 sqm
View : <http://www.oneagencylv.com.au/sale/vic/gippsland/traralgon/residential/house/7267183>



Anthony Bloomfield
03 5174 2740



Siobhan McNulty
0474 476 355



ONE AGENCY
LATROBE VALLEY