



7 Sharnee Court Moe VIC

4 3 3

Unique & special properties like 7 Sharnee Court, Moe very rarely come onto the market and tend to be extremely popular. This stunning luxury home is picture perfect, immaculately presented, and incorporates the very best in indoor/outdoor living with quality fixtures and fittings throughout the home and some wonderful extras that most only dream about. Comprising of four bedrooms, home office and three living zones which includes an enormous sunroom which makes the most out of the magnificent views of Baw Baw Ranges and still plenty of garden space for the kids.

Featuring:

?A unique quality-built home with a flowing floor plan in Moe's most sought-after Mountain View Estate on a large 995m2 approximate block.

Land Size : 995 sqm
View : <http://www.oneagencylv.com.au/sale/vic/gippsland/moe/residential/house/7349006>

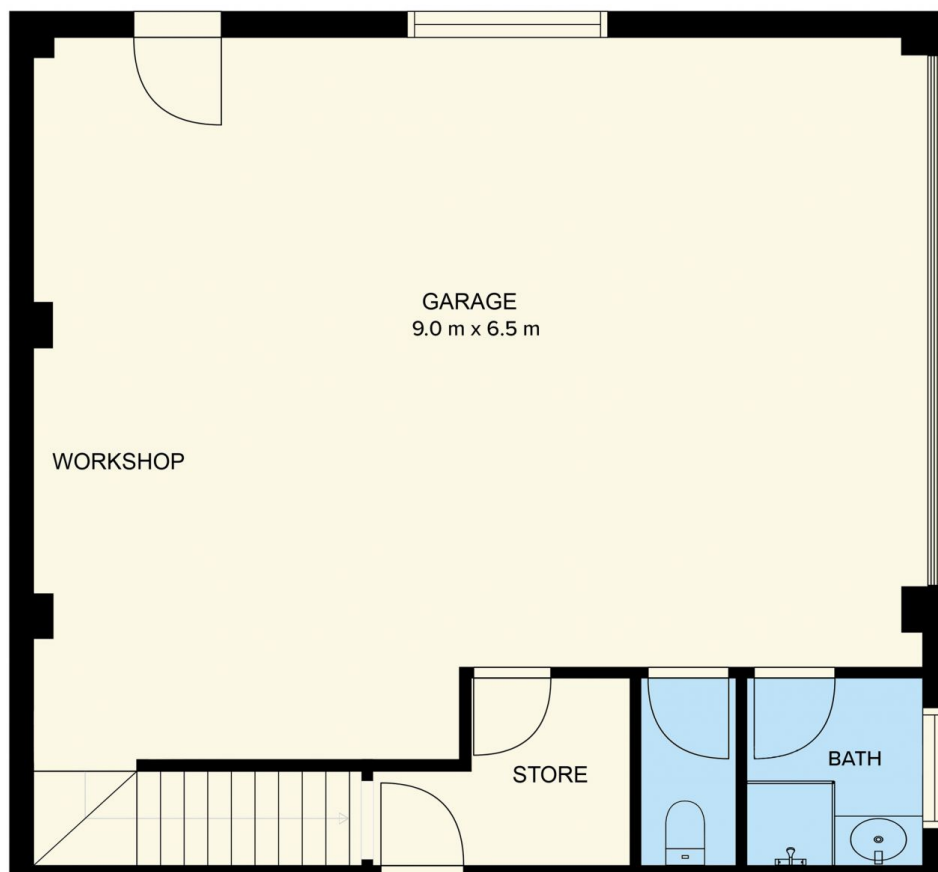
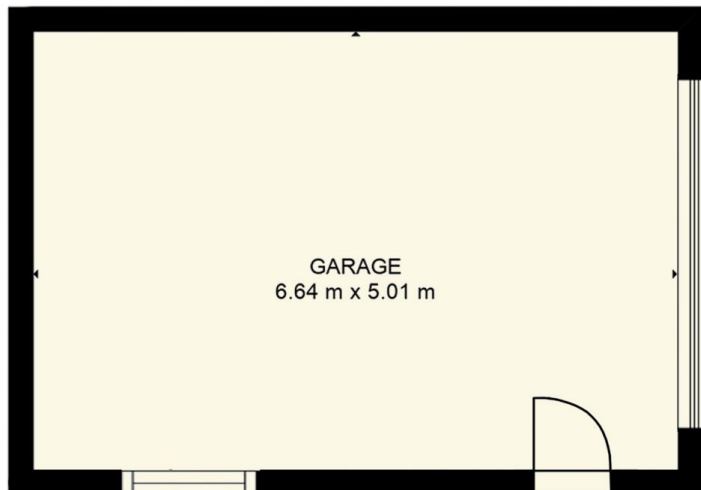


Anthony Bloomfield
03 5174 2740



Living	26.60sqs
Garage	9.14sqs
Sunroom	2.80sqs
Total	38.54sqs

Whilst every attempt has been made to ensure the accuracy of the floor plan contained here, all measurements are approximate and are for illustration purposes only. No responsibility is taken for any error, omission or misstatement.



Whilst every attempt has been made to ensure the accuracy of the floor plan contained here, all measurements are approximate and are for illustration purposes only. No responsibility is taken for any error, omission or misstatement.