



30 Coxall Road Jeeralang Junction VIC

3 2 4

This magnificent property demonstrates how peaceful a new lifestyle can be. Nestled amongst a private 5 acre bush setting 30 Coxall Road, in Jeeralang Junction is a much-loved, renovated 3 bedroom family home with great shedding and exceptional outdoor entertaining that is sure to impress.

Features include:

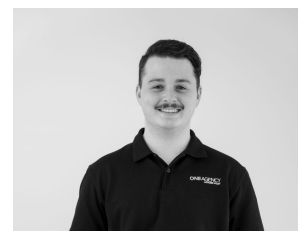
- Exquisite lounge with captivating views has split system air conditioning and features an open fire place with internal chimney
- Updated kitchen includes low maintenance slate flooring, pressed tin splash back, electric cooking, good sized built in pantry, great storage, dishwasher, and ample bench space

[For full version visit the website](http://www.oneagencylv.com.au)

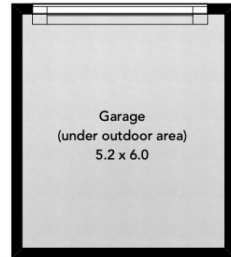
Type : House
Price : \$ 645,000
Land Size : 20000 sqm
View : <http://www.oneagencylv.com.au/sale/vic/gippsland/jeeralang-junction/residential/house/7943576>



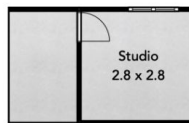
Anthony Bloomfield
03 5174 2740



Josh Quigley
03 5174 2740



Shed locations not to scale



ONEAGENCY
LATROBE VALLEY