

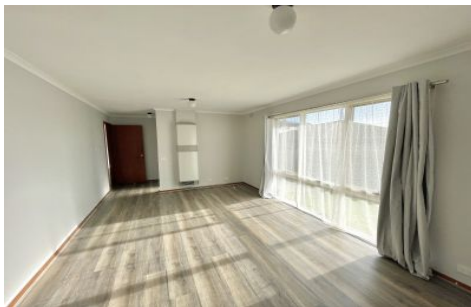


## Sorry, I'm Under Application



**Christal Crosdale**  
0474 355 636 | [christal@oneagencylv.com.au](mailto:christal@oneagencylv.com.au)

**ONE AGENCY**  
LATROBE VALLEY



### 14 Bowden Court Traralgon VIC

3  1  1 

Situated in close proximity to both primary, secondary schools and walking distance to local shops.

Features include:

- Neat and tidy galley kitchen with gas cooking and adjoins an adequately sized dining space.
- A large lounge offers ample living space with gas heating
- Each of the three bedrooms include low maintenance flooring, master bedroom features a built in robe
- The family bathroom includes a separate shower room, a full sized bath and separate toilet.
- A secure rear yard, garden shed and double gate rear access.

**\*\*Rent will be set to increase in September 2024\*\***

**Price** : \$340 pw  
**Land Size** : 615 sqm  
**View** : <http://www.oneagencylv.com.au/lease/vic/gippsland/traralgon/residential/house/7990987>



**Christal Crosdale**  
03 5174 2740



**Nell Fothergill**  
03 5174 2740