



## 70 Boulton Crescent Tyers VIC

4  2  4 

If you've been searching for serious shedding, space to spread out, and a home that supports your hobbies and lifestyle this property delivers in every way.

Set among established gum trees on a generous block, this versatile Tyers retreat offers the perfect balance of functionality and comfort. With an impressive 6 x 14m powered shed, complete with concrete floor, workbenches and water, plus an adjoining concrete slab, there's exceptional space for projects, storage, vehicles, or running a home based venture.

Self sufficiency is also well considered, with over 70,000L of water storage across two tanks, ensuring practicality for gardens and household use.

[For full version visit the website](http://www.oneagencylv.com.au)

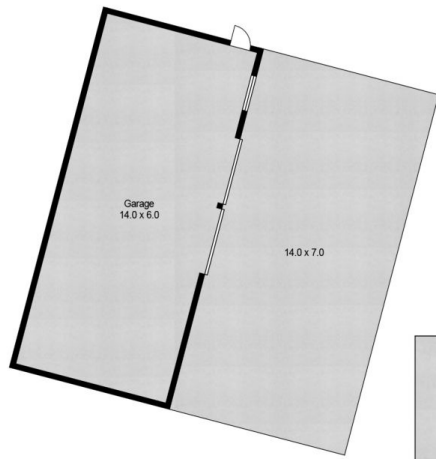
**Type** : House  
**Price** : \$ 795,000  
**Land Size** : 8788 sqm  
**View** : <http://www.oneagencylv.com.au/sale/vic/gippsland/tyers/residential/house/8605914>



**Brett Chapman**  
03 5174 2740

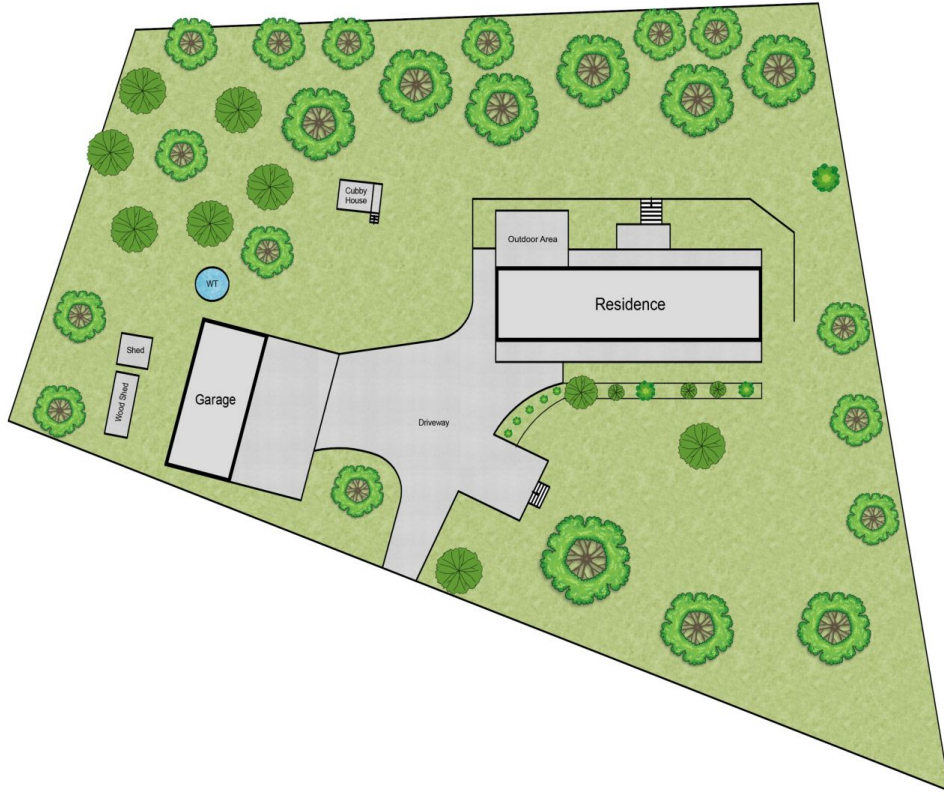


**Anthony Bloomfield**  
03 5174 2740



This plan is not to scale.  
All measurements are approximate & individuals should rely on their own information.

**ONE AGENCY**  
LATROBE VALLEY



This plan is not to scale.  
All measurements are approximate & individuals should rely on their own information.

**ONE**AGENCY  
LATROBE VALLEY