



6 Ambrose Avenue Traralgon VIC

3 1 2

One Agency Latrobe Valley is proud to present 6 Ambrose Avenue, Traralgon. Situated on an approx. 717m2 block and located just around the corner from the popular West End shopping strip, this property has huge potential.

Very tastefully presented internally, featuring neutral tones, polished timber floors and a clean user-friendly kitchen. Additional features include a cozy lounge with a wood heater and 3 bedrooms all of which are an excellent size.

It is the outside that will excite. A huge undercover pergola area that leads out to a gorgeous garden, the perfect place to entertain family and friends. The property also includes an approximate 6 x 9m lock up garage with remote door access.

6 Ambrose Avenue is another one of those properties that

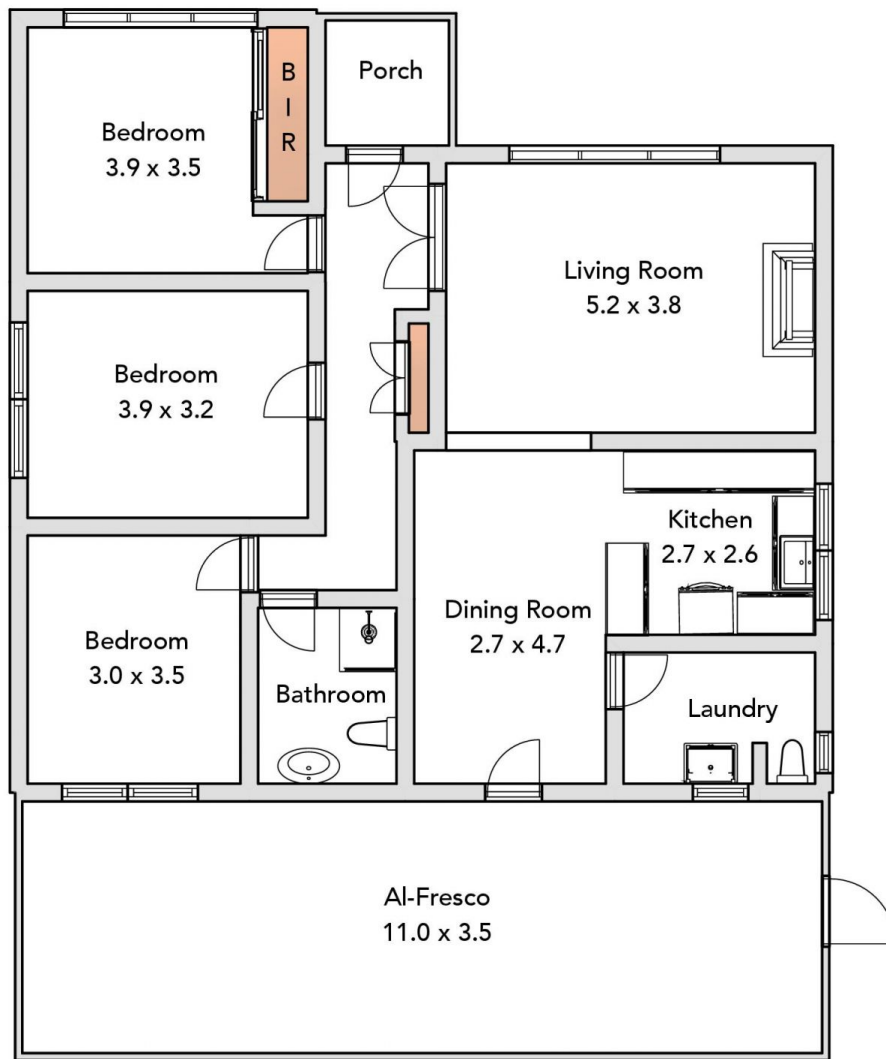
Price : \$ 435,000
Land Size : 717 sqm
View : <https://www.oneagencylv.com.au/sale/vic/gippsland/traralgon/residential/house/6722746>



Anthony Bloomfield
03 5174 2740



Siobhan McNulty
0474 476 355



ONE AGENCY
LATROBE VALLEY

