



3 Lyndon Crescent Traralgon VIC

3 1 4

Well presented, on an approximate 661m2 allotment in a quiet location and close to schools, parks, and shops, 3 Lyndon Crescent, Traralgon is an ideal first home or investment property!

Features include:

- Generous approx. 661m2 size block
- 3 Bedrooms, 2 with BIRs
- Large, comfortable lounge with gas log heater, adjoins the newly renovated light filled kitchen
- Updated bathroom and laundry
- Split System Air-conditioner
- Low maintenance gardens
- Lovely undercover, decked entertainment area. Perfect for entertaining all year round
- Two large rear sheds, 4.1m x 7.8m and 5.5m x 10m, inclusive of wood heater and side access

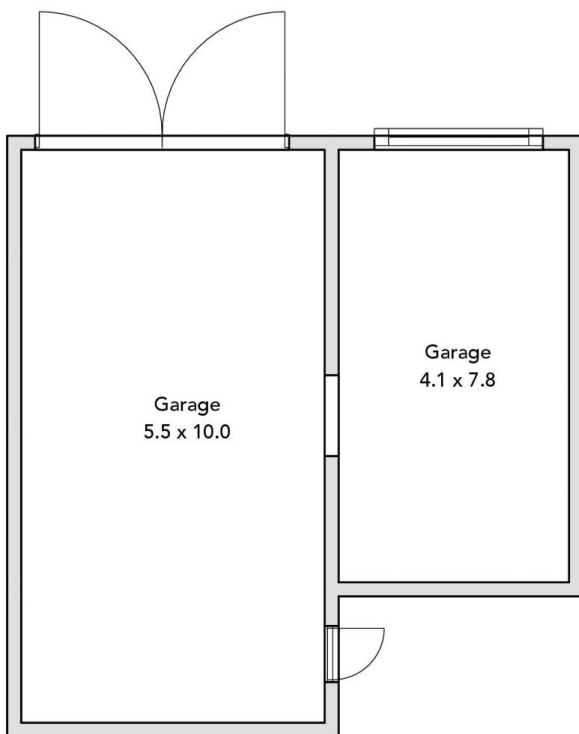
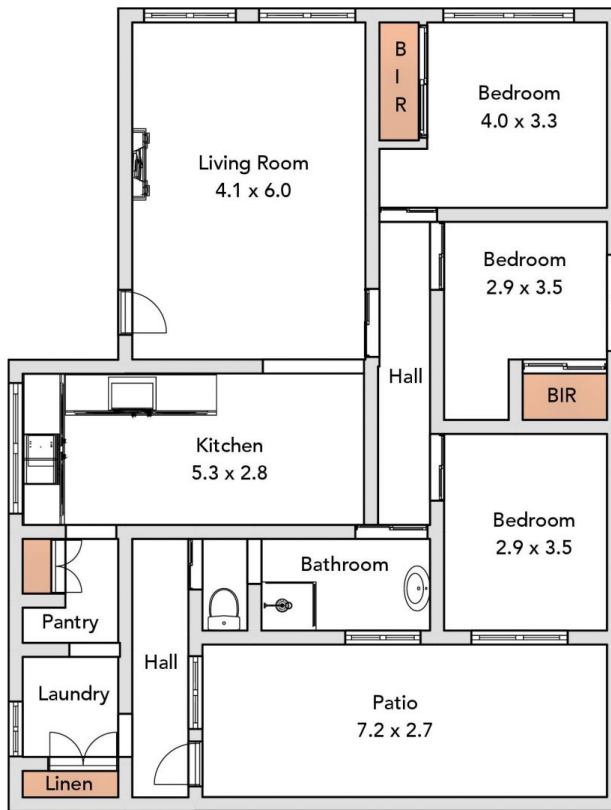
Price : \$ 412,000
Land Size : 661 sqm
View : <https://www.oneagencylv.com.au/sale/vic/gippsland/traralgon/residential/house/6808221>



Anthony Bloomfield
03 5174 2740



Siobhan McNulty
0474 476 355



ONE AGENCY
LATROBE VALLEY