



5 Lang Way Tyers VIC

3 1 3

One Agency Latrobe Valley is proud to present 5 Lang Way, Tyers. With captivating valley views and sitting on approximately 2.2 acres, this 2-level residence epitomises the luxury of absolute country living.

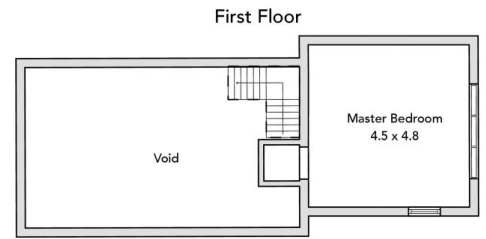
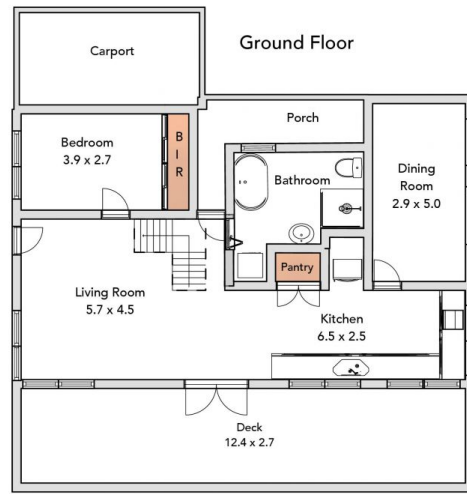
The 2 bedroom home comprises of a free-flowing floor plan and light filled stylish interiors with a soaring high ceiling in the main living space plus the flexibility of a multi purpose living area that could be used as a dining space or 3rd bedroom. The kitchen incorporates electric cooking, built in pantry and timber cabinetry and in conjunction with the lounge, opens to the wonderful wide north facing deck with amazing views over the valley and beyond.

Additional features include an updated bathroom which incorporates a European style laundry. Low maintenance tiled flooring through the main living areas. Solid fuel

Price : \$ 650,000
Land Size : 8930 sqm
View : <https://www.oneagencylv.com.au/sale/vic/gippsland/tyers/residential/house/6810937>



Anthony Bloomfield
 03 5174 2740



ONE AGENCY
LATROBE VALLEY

