



1 Lyons Street Rosedale VIC

2 1 3

This charming 1870's weatherboard miners cottage with amazing street appeal is filled with a wealth of character with high ceilings and immaculate presentation while being situated on an approximate 1145m2 allotment on the outskirts of the vibrant Rosedale township.

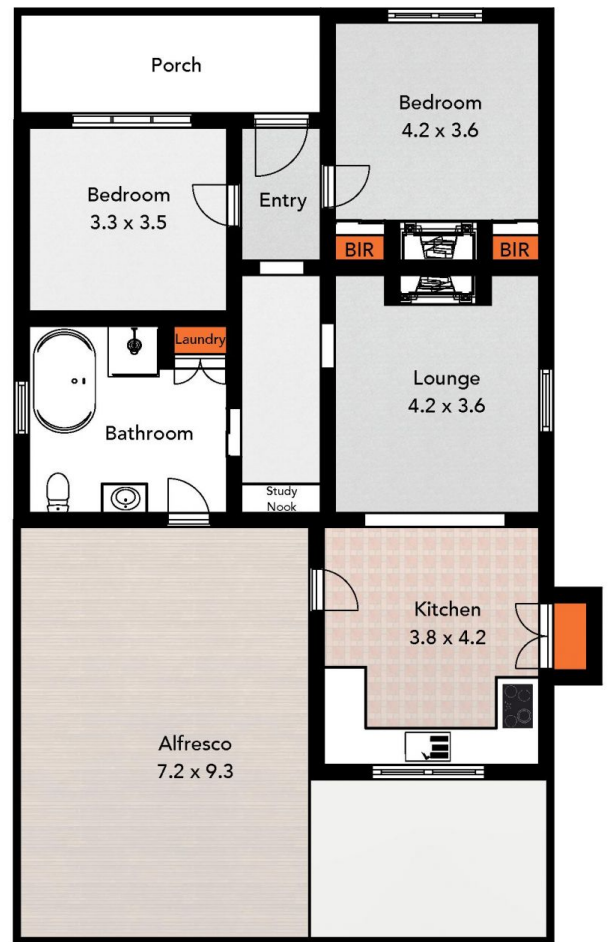
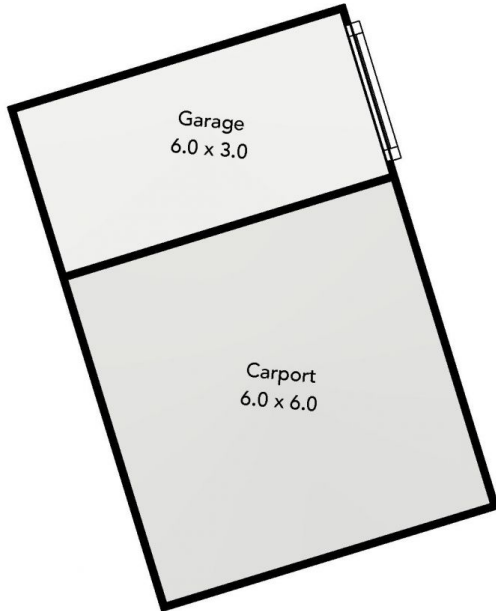
Price : \$ 465,000
Land Size : 1145 sqm
View : <https://www.oneagencylv.com.au/sale/vic/gippsland/rosedale/residential/house/7595603>

Features Include:

- Lovely kitchen includes electric cooking and built in pantry recessed into an old brick fireplace
- Cosy lounge with solid fuel wood heater and split system air conditioning
- 2 good sized bedrooms, the master includes built in robes and open fire place
- Large bathroom incorporates a European laundry, step in shower and claw foot bath
- Study nook



Anthony Bloomfield
03 5174 2740



ONE AGENCY
LATROBE VALLEY

