

78 Manning Drive Churchill VIC

3 2 1

This 3 bedroom home has been thoughtfully updated and will suit a couple or small family ready to create their first home. Both front & back yards have been landscaped for easy maintenance whilst offering areas that can be enjoyed entertaining or just relaxing with the family. Close proximity to the Gaskin Park sporting complex, the Churchill town centre as well as local schools ensures that this home will tick a lot of boxes for first home buyers looking to break into the market.

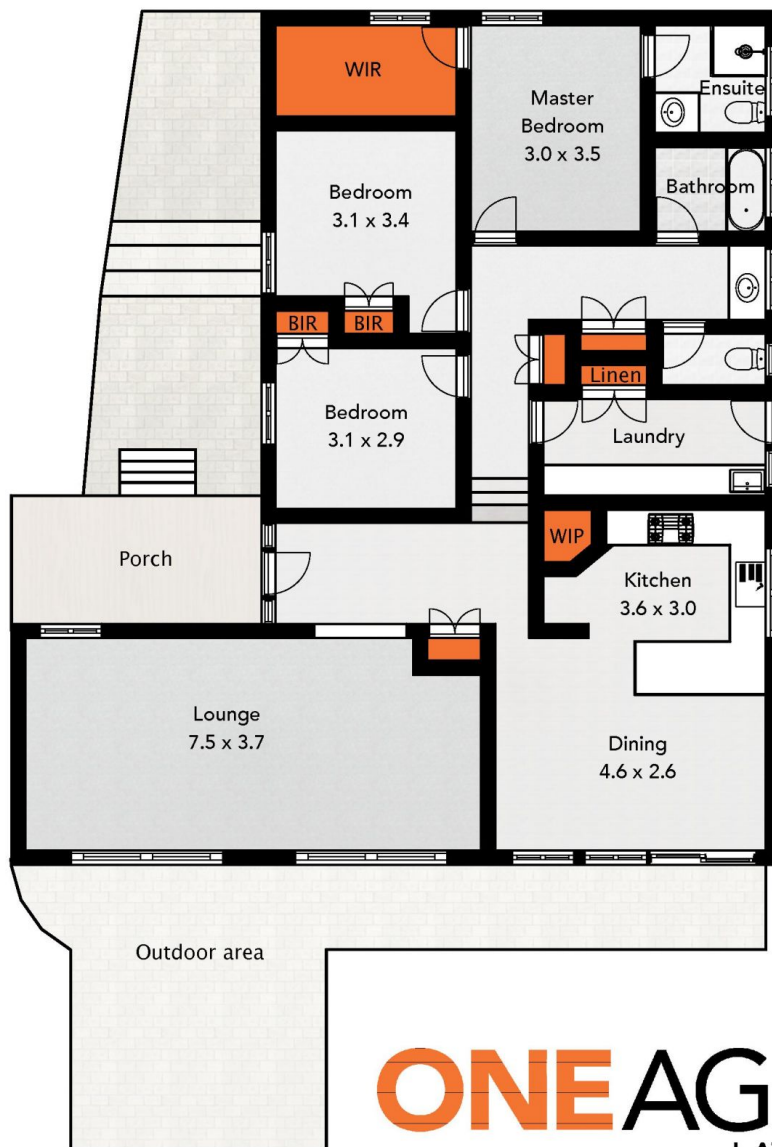
Additional Features:

- Light and bright kitchen includes electric cooking, built in pantry, ample bench space and good storage
- Separate dining with glass sliding doors to rear yard
- Large lounge features split system air conditioning
- Master bedroom includes a large walk in robe and ensuite
- Each of the two remaining bedrooms feature built in robes

Price : \$375,000
Land Size : 607 sqm
View : <https://www.oneagencylv.com.au/sale/vic/gippsland/churchill/residential/house/7939416>



Anthony Bloomfield
 03 5174 2740



ONEAGENCY
LATROBE VALLEY